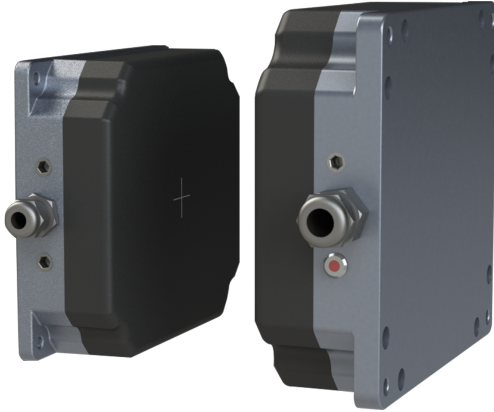


WIRELESS CHARGING 48V

AB-WLC-1200

ATOMBOTIX



High Efficiency & Energy Saving



90% transmission efficiency cuts energy use, speeds up charging, boosts energy efficiency, and cuts costs

Flexible Adaptation



Constant-current to constant-voltage charging management smartly suits diverse devices. It precisely handles low-battery quick charging and full-battery trickle charging for optimal results

Safety & Reliable



The contactless charging mechanism eradicates the potential hazards of electric shock and current leakage, ensuring a secure and dependable charging experience

Robust & Durable



IP67-rated transmitter and receiver. The sealed design resists dust and water. Stable in any setting, from dusty outdoors to humid indoors, it offers lasting, reliable charging

| Model | AB-WLC1200-48V20A | AB-WLC3000-48V50A |
|--------------------------------------|---|---|
| Electrical Parameters | | |
| Rated Power | 1200 W | 3000 W |
| Pre-stage Power Supply Voltage Input | 90-264 VAC | 110 -264 VAC |
| Rated Output Voltage Range | 40 - 60 VDC | 40-60 VDC |
| Rated Output Current Range | 0 - 20 A | 0 - 50 A |
| Max. Transmission Efficiency | 90% | 87% |
| Essential Parameters | | |
| Vertical Working Distance | 30 - 50 mm | 40 - 80 mm |
| Maximum Horizontal Offset Distance | Long - axis 20 mm, short - axis 10 mm | Long - axis 20 mm, short - axis 10 mm |
| Charging Management | Constant - current & constant - voltage | Constant - current & constant - voltage |
| Over-temperature Protection | Support | Support |
| Output Over-current Protection | Support | Support |
| Output Over-voltage Protection | Support | Support |
| Communication | RS485, CAN | RS485, CAN |
| Alarm and Charging Status Indication | Indicator light alarm | Indicator light alarm |
| RF Data Communication Frequency | 2.4GHz | 2.4GHz |
| Cooling Method | Natural cooling | Natural cooling |

Dimensions

| | | |
|-------------------------------|-------------------------|-------------------------|
| Transmitter Size | 190 mm × 170 mm × 60 mm | 300 mm × 300 mm × 80 mm |
| Receiver Size | 190 mm × 170 mm × 60 mm | 250 mm × 250 mm × 70 mm |
| Transmitter Weight | 3 kg | 10 kg |
| Receiver Weight | 2.3 kg | 10 kg |
| Environment Parameters | | |
| Working Temperature | -20°C - 45°C | -40°C - 60°C |
| Working Humidity | 0 - 85% | 0 - 85% |
| Storage Temperature | -25°C - 85°C | -40°C - 70°C |
| Protection Level | | |
| Emitter Protection Level | IP67 (Encapsulation) | IP65 |
| Receiver Protection Level | IP67 (Encapsulation) | IP65 |

